



NEBRASKA ETHANOL BOARD

STATE OF NEBRASKA

DAVE HEINEMAN
GOVERNOR

TODD C. SNELLER
ADMINISTRATOR

PRESS RELEASE

For Immediate Release

July 19, 2011

For More Information Contact:

Todd Sneller at (402) 471-2941

Ethanol workers earn more than other industries

Growth in wages in the ethanol sector outpaced all industry wage growth in the past decade, increasing by more than 58%.

According to the Nebraska Department of Labor, average pay in the ethanol sector has increased from \$35,479 in 2000 to \$56,158 in 2010. Meanwhile, the statewide average pay for all industries in Nebraska was \$37,319 in 2010.

While the recession of has caused stagnating pay or job reductions in some industries, the ethanol industry has helped keep the Midwest's economy robust, said Nebraska Ethanol Board Administrator Todd Sneller.

"Ethanol is vital to Nebraska's economy," said Sneller. "The ethanol industry has created thousands of jobs while saving drivers money and burning more cleanly than gasoline."

Another study from NPPD has found that Nebraska's ethanol industry has directly created over 1,300 jobs, saved drivers \$200 million through lower fuel prices, and created \$3.5 billion in total economic output. State and local governments have collected over \$30 million in new tax revenues created by the ethanol industry.

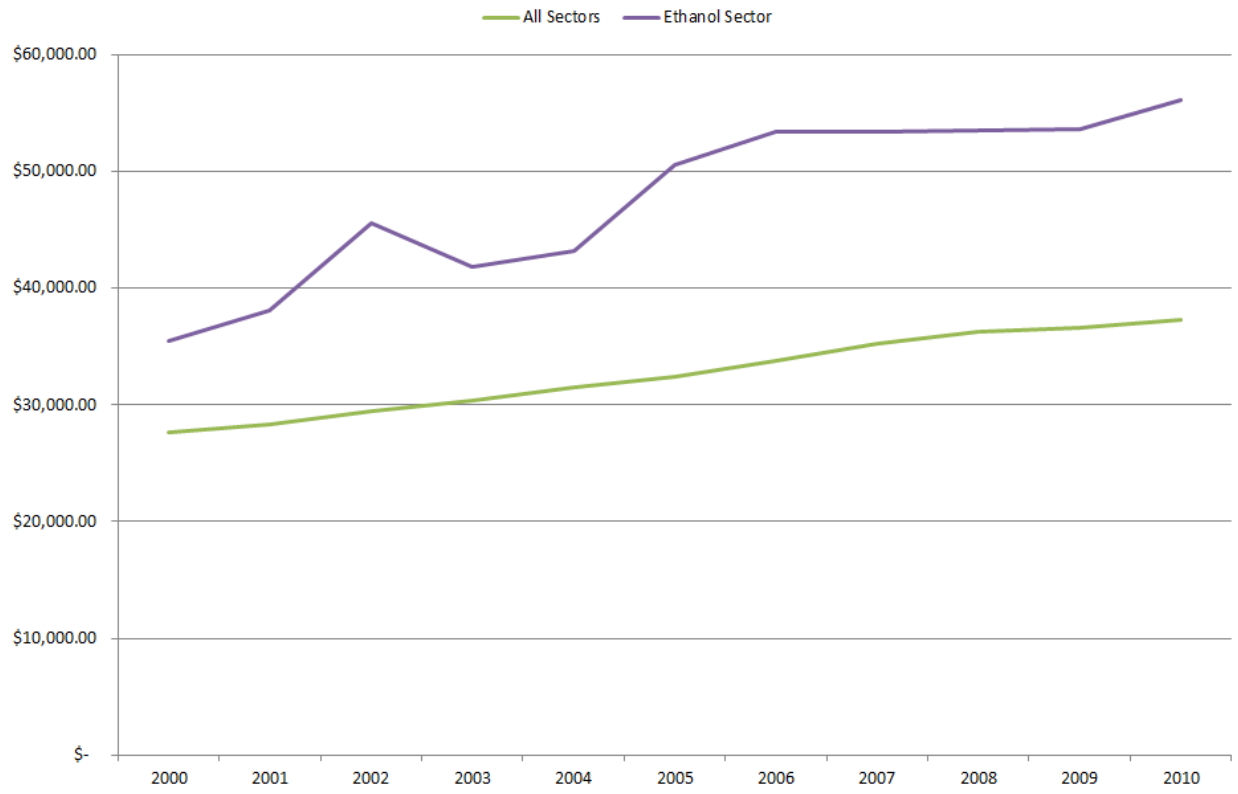
Catherine Lang, the Nebraska Commissioner of Labor, said the ethanol industry has been a boon for the state's economic development.

"A vibrant rural economy is vital for the economic success of Nebraska. The ethanol industry provides high skill, high wage jobs for citizens across Nebraska. The Industry has been a strong partner along with our educational institutions, assuring that there are education and training programs to develop the skilled workforce to support and maintain this important industry in Nebraska," Lang said.

Sneller said the ethanol industry has had an especially positive economic impact in rural areas.

"The ethanol industry has indirectly created over 3,000 jobs, many of these in rural areas where higher than average wages have an even great impact," Sneller said.

Nebraska Annual Average Wages: Ethanol sector vs. all sectors



Source: Nebraska Department of Labor

View a list and map of E85 and ethanol blender pump locations at the [Nebraska Ethanol Board website](#). See past news releases from the Nebraska Ethanol Board on the ["News & Opinion" page](#).

Established in 1971, the Ethanol Board assists ethanol producers with programs and strategies for marketing ethanol and related co-products. The Board supports organizations and policies that advocate the increased use of ethanol fuels – and administers public information, education and ethanol research projects. The Board also assists companies and organizations in the development of ethanol production facilities in Nebraska. For more information, please visit www.ne-ethanol.org.

